



DIGGA

Attachment Range

Machinery Attachment Manufacturer Since 1981

DIGGA MANUFACTURING

NOT JUST ASSEMBLERS WE ARE THE ORIGINAL MANUFACTURER

About Digga™

Digga is Australia's largest earthmoving attachment and planetary gearbox manufacturer; exporting products globally through 5 company owned, international facilities and its loyal dealer network. Formed in 1981 by founder, Chairman & Director of Research and Development, Stewart Wright, Digga pioneered pendulum drilling in Australia and today produces the largest range of compact, high-torque planetary drives for drilling and the attachment industry. Digga are a multi-award winning company both for product design and business practices, recognised for their innovative approach to leading edge design and manufacturing quality.



Digga manufacturing

Digga are not just an assembly plant, we are the original manufacturer. Our central manufacturing and head office facilities are located in Brisbane, Australia and the 12,500sqm, state-of-the-art facility features some of the most technologically advanced machinery in Australia. We manufacture Digga gears, components and attachment range using only the highest grade material and work to meet ISO 9001 quality assurance standards across all our sites.



Distribution

Distributing to over 72 countries around the world via our dedicated dealer network, we have 5 company owned facilities in key international locations to service our global market.

Digga Australia - Brisbane, Sydney and Melbourne
Digga USA - Dyersville, Iowa
Digga EU - Hungerford, England



Research & Development

A full time Research & Development division are committed to new and better methods of manufacturing, product design and new product development and as such Digga continually provide global customers with a superior product at an always competitive price.

OUR PHILOSOPHY

WE WILL ENDEAVOUR TO MANUFACTURE QUALITY MADE, AFFORDABLE PRODUCTS WITHOUT SACRIFICING OUR GOALS OR PRODUCT INTEGRITY. WE WILL SUPPLY YOU WITH A PRODUCT RANGE AND EXPERTISE THAT WILL BECOME INVALUABLE TO YOUR BUSINESS.

QUALITY, SERVICE, RELIABILITY
GUARANTEED

EXPORT AWARDS:

- 2002 GOLD COAST REGIONAL EXPORT AWARD
- 2009 BRITISH EXPORT EXCELLENCE AWARD
- 2013 QLD EXPORT AWARD
- 2014 QLD MANUFACTURING EXPORTER OF THE YEAR
- 2015 QLD MANUFACTURING EXPORTER OF THE YEAR
- 2017 QLD EXPORT AWARD - LEADERSHIP & INNOVATION



Digga's 12,500m² (130,000 sq ft) state of the art manufacturing facility, Brisbane Australia.



Contents

Auger drives	4
Anchor drives	9
Hitches and mounts	12
Augers	14
Extensions	15
Wear parts	15
Trenchers	16
Other attachments	18



THE MOST ADVANCED AUGER DRIVE YOU'LL EVER OWN OR OPERATE.

WE ARE NOT JUST AN ASSEMBLER, DIGGA ARE
THE ORIGINAL DESIGNERS AND MANUFACTURERS.

OUR CORE EXPERTISE: 2,900Nm – 500,000Nm
(AND EVERYTHING IN BETWEEN).

A TRUSTED REPUTATION FOR DELIVERING QUALITY PRODUCTS THAT PERFORM



INTEGRATED MOTOR AND OUTPUT HOUSING



Working with leading motor manufacturers Eaton, Digga have developed our unique range of custom, hydraulic motors designed specifically for the earth moving industry.

The design merges the motor with the input housing creating a direct connection to the gearset and eliminating the need for several gearbox components. In turn, the weight and overall length of the drive unit are amongst the most compact on the market. There are also less moving parts and fewer potential leak points.

With the hydraulic motor ports positioned practically within the drive unit, manoeuvrability when drilling is maximised and there is greater protection to hoses and fittings during transport and storage.



MORE COMPACT DESIGN, LESS MAINTENANCE

All of our gears are precision machined from high grade alloy steel, specifically formulated for the manufacture of high performance gears in the earth moving industry. The compact design of our gear set allows for greater length under the drive, for augers or pile installation. As our drives can go down the hole they provide added depth when drilling allowing you to work more efficiently.

DESIGN AND DEVELOPMENT

Digga utilises advanced 3D modeling software, finite analysis, cyclic testing, and extensive in field testing to ensure a product that performs, day in and day out.

LEADING WARRANTY



2 PIECE SHAFT DESIGN

The Digga 2 piece shaft design gives the operator greater peace of mind should there be a bearing failure. Our design allows for minimal movement in the shaft even after preload comes off - by making the Digga shaft a separate component to the planetary carrier, the planetary gears are isolated from the pushing, pulling and bending forces generated by the machine.

Digga offer a lifetime warranty on shaft pullout.



HIGHEST SIDE LOAD RATINGS

Digga drives have more than double the side load capacity of any other gearbox on the market. Under torque load, the Digga two piece shaft design ensures there is no increased load on the bearing. The bearings do the job they were designed for, efficiently maintaining axial and side loading.



VIS TWO SPEED

High quality motor manufactured by EATON. The VIS series is 50% more efficient than conventional gear motors. It is contamination resistant, capable of 60kw power (95Hp) and tolerates higher pressures than the 6K series.

Digga 2-speed motors boast an increase of 50% in high speed/low torque.



ENERGY CONTROL VALVE

The Digga engineered Energy Control Valve (ECV) is fitted to the drive manifold and controls the rapid decompression of oil (pile Kick-Back) caused during the application of screw anchoring. It can also be retrofitted to most Digga drilling drives.

DIGGA PREMIUM AUGER DRIVES

Digga's Premium Drives (PD) are optimised to the tonnage of your machine ensuring a more accurate drive selection.

E.g 5 tonne machine

Standard selection - PD5

Lighter duty (more speed) - PD4

Heavy duty (more power) - PD6

FEATURES

- Compact high torque Digga manufactured gearbox
- Highly efficient design with less moving parts
- Fitted with Eaton/Digga geroler hydraulic motor
- No case drain required
- Full range of shafts available upon request
- Extreme duty shaft locking system
- Drive fits down the hole for greater digging depth
- Low maintenance with 5 year gear box and 3 year motor warranty

MACHINES 750KG - 2T

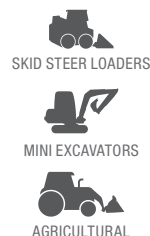
	PDD	PDX	PDX2
Rec Flow Range	15-45 lpm	20-50 lpm	30-50 lpm
Max Torque	1,171 Nm	1,743 Nm	2,307 Nm
Pressure Valve Fitted	N / A	N / A	N / A
Max Pressure	Do not exceed 240 bar @ 60 lpm		
Max Flow	Do not exceed 115 lpm @ 130 bar		
Max Power	Do not exceed 25 Kw (34 hp)		
Overall Length	500 mm	557 mm	557 mm
Diameter	187 mm	187 mm	187 mm
Weight (no hitch)	41 Kg	45 Kg	45 Kg
Std Output Shaft	65 mm RND	65 mm RND	65 mm RND

MACHINES 2T - 5T

	PDX2	PD3	PD4	PD5	PD6
Rec Flow Range	30-50 lpm	45-75 lpm	55-85 lpm	60-95 lpm	70-115 lpm
Max Torque	2,307 Nm	3,544 Nm	4,448 Nm	5,151 Nm	5,596 Nm
Pressure Valve Fitted	N / A	Optional	Optional	Optional	Optional
Max Pressure (Do not exceed)	240 bar @ 60 lpm				
Max Flow (Do not exceed)	115 lpm @ 130 bar				
Max Power (Do not exceed)	25 Kw (34 hp)				
Overall Length	557 mm	579 mm	579 mm	579 mm	730 mm
Diameter	187 mm	240 mm	240 mm	240 mm	240 mm
Weight (no hitch)	45 Kg	57 Kg	58 Kg	67 Kg	89 Kg
Std Output Shaft	65mm RND	65mm RND	65mm RND	75 mm SQ	75 mm SQ
2 Speed Available	NO	YES	NO	NO	YES
Max Pressure (Do not exceed)	200 bar @ 76 lpm				
Max Flow (Do not exceed)	76 lpm @ 200 bar				

MACHINES 5T - 10T

	PD5	PD6	PD7	PD6HF	PD8HF	PD10HF
Rec Flow Range	60-95 lpm	70-115 lpm	75-115 lpm	70-150 lpm	80-200 lpm	100-200 lpm
Max Torque	5,151 Nm	5,596 Nm	6,040 Nm	5,634 Nm	7,136 Nm	9,690 Nm
Pressure Valve Fitted	Optional	Optional	Optional	Included	Included	Included
Max Pressure (Do not exceed)	240 bar @ 60 lpm			240 Bar @ 130 lpm		
Max Flow (Do not exceed)	115 lpm @ 130 bar			210 lpm @ 145 bar	230 lpm @ 130 Bar	230 lpm @ 130 Bar
Max Power (Do not exceed)	Do not exceed 25 Kw (34 hp)			50 Kw (67HP)		
Overall Length	579 mm	730 mm	734 mm	950 mm	950 mm	950 mm
Diameter	240 mm	240 mm	240 mm	290 mm	290 mm	290 mm
Weight (no hitch)	67 Kg	89 Kg	90 Kg	149 Kg	149 Kg	149 Kg
Std Output Shaft	75 mm SQ	75 mm SQ	75 mm SQ	75 mm SQ	75 mm SQ	75 mm SQ
2 Speed Available	NO	YES	NO	YES	YES	YES
Max Pressure (Do not exceed)	200 bar @ 76 lpm			240 bar @ 150 lpm		
Max Flow (Do not exceed)	76 lpm @ 200 bar			180 lpm @ 200 bar		



EXPORTING TO THE WORLD FOR OVER 10 YEARS

THE DEMAND FOR DIGGA PRODUCTS GLOBALLY LEAD THE BUSINESS LAUNCHING INTO EXPORT TRADES IN 1996. WE OPENED INTERNATIONAL MANUFACTURING AND DISTRIBUTION PLANTS IN EUROPE AND THE USA AND BUILT ON OUR LOYAL DEALER NETWORK TO MEET THE REQUIREMENTS OF INTERNATIONAL MARKETS.

MACHINES 5T - 12T

	PD4HF	PD6HF	PD8HF	PD10HF
Rec Flow Range	50-150 lpm	60-150 lpm	80-200 lpm	100-200 lpm
Max Torque	4,473 Nm	5,634 Nm	7,136 Nm	9,690 Nm
Pressure Valve Fitted	Included	Included	Included	Included
Max Pressure	Do not exceed 240 bar @ 130 lpm			
Max Flow (Do not exceed)	170 lpm @ 180 bar	210 lpm @ 145 bar	230 lpm @ 130 bar	230 lpm @ 130 bar
Max Power	Do not exceed 50 Kw (67 hp)			
Overall Length	950 mm	950 mm	950 mm	950 mm
Diameter	290 mm	290 mm	290 mm	290 mm
Weight (no hitch)	125 Kg	149 Kg	149 Kg	149 Kg
Std Output Shaft	75 mm SQ	75 mm SQ	75 mm SQ	75 mm SQ
2 Speed Available	YES	YES	YES	YES
Max Pressure (Do not exceed)	240 bar @ 150 lpm			
Max Flow (Do not exceed)	180 lpm @ 200 bar			

EXCAVATORS 10T - 20T

	PD12	PD15	PD18	PD22	PD25
Rec Flow Range	120-230 lpm	120-230 lpm	120-230 lpm	120-230 lpm	120-230 lpm
Max Torque	11,268 Nm	13,918 Nm	17,630 Nm	22,176 Nm	26,267 Nm
Pressure Valve Fitted	Included	Included	Included	Included	Included
Max Pressure	Do not exceed 240 bar @ 130 lpm				
Max Flow (Do not exceed)	230 lpm @ 130 bar	210 lpm @ 145 bar	230 lpm @ 130 bar	230 lpm @ 130 bar	230 lpm @ 130 bar
Max Power	Do not exceed 50 Kw (67 hp)				
Overall Length	950 mm	1,006 mm	1,006 mm	1,006 mm	1,152 mm
Diameter	290 mm	290 mm	290 mm	290 mm	355 mm
Weight (no hitch)	149 Kg	176 Kg	176 Kg	176 Kg	300 Kg
Std Output Shaft	75 mm SQ	75 mm SQ	75 mm SQ	75 mm SQ	100 mm SQ
2 Speed Available	YES	NO	YES	YES	NO
Max Pressure (Do not exceed)	240 bar @ 150 lpm				
Max Flow (Do not exceed)	180 lpm @ 200 bar				

EXCAVATORS 20T - 50T

	PD25	PD30	PD40	PD50
Rec Flow Range	120-230 lpm	120-230 lpm	120-230 lpm	120-230 lpm
Max Torque	26,267 Nm	30,543 Nm	33,041 Nm	38,420 Nm
Pressure Valve Fitted	Included	Included	Included	Included
Max Pressure	Do not exceed 240 bar @ 130 lpm			
Max Flow	Do not exceed 230 lpm @ 130 bar			
Max Power	Do not exceed 50 Kw (67 hp)			
Overall Length	1,152 mm	1,152 mm	1,152 mm	1,152 mm
Diameter	355 mm	355 mm	355 mm	355 mm
Weight (no hitch)	300 Kg	300 Kg	300 Kg	300 Kg
Std Output Shaft	100 mm SQ	100 mm SQ	100 mm SQ	100 mm SQ
2 Speed Available	YES	YES	YES	YES
Max Pressure (Do not exceed)	240 bar @ 150 lpm			
Max Flow (Do not exceed)	180 lpm @ 200 bar			



HIGH POWERED AUGER DRIVES

TO SUIT 15 TO 30 TONNE MACHINES

- ✓ COMPACT & POWERFUL
- ✓ DELIVERING FASTER DRILLING SPEEDS AT HIGH TORQUE

NO NEED TO SACRIFICE SPEED FOR TORQUE OR TORQUE FOR SPEED

Our single speed, high powered range of auger drives can handle higher machine hydraulic pressures to deliver greater power at higher RPM to suit drilling applications on 15 to 30 tonne machines. Fitted with a high efficiency radial piston motor and integrated input housing, these drives will help you increase productivity and reduce downtime to optimise your returns.

Features:

- Fitted with high efficiency radial piston motor
- Highly efficient design
- Low maintenance
- Host machine does not need to be detuned
- Compact, powerful Digga planetary gearbox
- 2 piece shaft with a lifetime pullout warranty



	PD30HP	SD45HP	SD55HP
Rec Flow Range	15-240 lpm	15-240 lpm	15-240 lpm
Max Torque	30,250 Nm	44,150 Nm	57,750 Nm
Pressure Valve Fitted	Optional	Optional	Optional
Motor	Radial Piston		
Case Drain Atmospheric Vent	Included		
Energy Control Valve	N/A		
Case Drain Required	Yes		
Max Pressure	Do not exceed 345 Bar @ 174 lpm		
Max Flow	Do not exceed 240 lpm @ 230 Bar		
Max Power	Do not exceed 90 Kw (121HP)		
Overall Length	1,221 mm	1,274 mm	1,274 mm
Diameter	460 mm	530 mm	530 mm
Weight (no hitch)	453 Kg	646 Kg	646 Kg
Std Output Shaft	100 mm SQ	100 mm SQ	100 mm SQ



2-SPEED AUGER DRIVES

- ✓ SPEED WHEN YOU NEED IT
 - ✓ TORQUE WHEN YOU NEED IT
- 2 DRIVES IN 1**

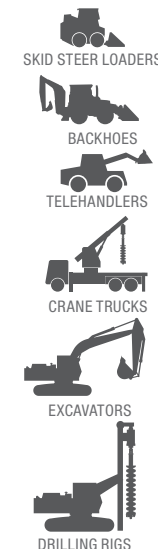
FULL RANGE OF 2-SPEED AUGER DRIVES AVAILABLE

Digga's 2-speed drilling auger drives have a high speed, low torque setting for the smaller auger jobs when you need the extra RPM, and low speed, high torque for when you really need to grind out that larger diameter hole.

All models feature the integrated Pressure Relief Valve (PRV) and have a simple electrical connection using the machines joystick or optional switch box.

The dual control increases usability and makes them suitable for a wide range of ground conditions:

- Soft loose soils
- Hard soils
- Rocky conditions



ANCHOR DRIVES

THE DIGGA DIFFERENCE - INTEGRATED SOLUTIONS

All valving and hoses are contained inside the hood for optimum efficiency and protection of the equipment.

- ✓ COMPACT & LOW MAINTENANCE
- ✓ HIGHEST SIDE LOAD RATINGS
- ✓ LEADING WARRANTY



THE RIGHT POWER SOLUTION FOR OPTIMUM PERFORMANCE

COMBINING INDUSTRY EXPERTISE

MODELS	MACHINE	TORQUE RANGE
Premium Drives (PD)	4-30 tonnes	4,400 - 40,000 Nm
Supa Drives (SD)	15-30 tonnes	45,000 - 90,000 Nm
Mega Drives (MD)	20 - 40 tonnes	115,000 - 200,000 Nm
Ultra Drives (UD)	30 - 50 tonnes	190,000 - 300,000 Nm
Xtreme Drives (XD)	35- 80 tonnes	260,000 - 500,000 Nm



RADIAL PISTON

We use radial high efficient piston motors in our range of anchor drives which are volumetrically superior to any other motor on the market today. This means that if you are operating with a Digga screw anchor drive you will use less fuel for the same number of holes compared to any other unit on the market. Digga radial piston motors are also more resistant to contamination from the oil so there is less opportunity for failure.

PATENTED ANTI KICK-BACK VALVE (ECV)

Screw anchors are installed to an engineering torque specification. When installation torque is reached and the operator stops the machine, the pile has built up a rotational energy (somewhat like a rubber band on a wind-up model plane). The pile momentarily 'kicks back', forcing the energy back up the pile through the drive shaft to the gearbox, through to the hydraulic motor. This action causes the motor to effectively turn into a high speed pump, generating cavitation of the motor which in turn can cause motor failure and expensive replacement costs. The Digga Energy Control Valve (ECV) controls the release of this energy; protecting your drive.

SUPA DRIVES

45,000 NM - 90,000 NM

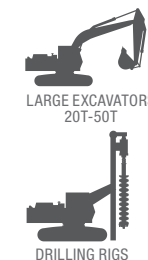
	SD 45	SD 50	SD 70	SD 80	SD 95
Max Torque*	44,333 Nm	51,985 Nm	68,018 Nm	81,986 Nm	91,215 Nm
Max Pressure - Do not exceed	240 bar @ 380 lpm				
Max Flow-Do not exceed	380 lpm @ 240 bar				
Max Power-Do not exceed	150 Kw				
Motor	Radial Piston	Radial Piston	Radial Piston	Radial Piston	Radial Piston
PRV	Included	Included	Included	Included	Included
ECV	Included	Included	Included	Included	Included
Overall Length	1493 mm	1493 mm	1493 mm	1493 mm	1493 mm
Diameter	600 mm	600 mm	600 mm	600 mm	600 mm
Weight No Hitch/Oil	838 kg	836 kg	836 kg	836 kg	843 kg
Shaft	100mm Square	100mm Square	100mm Square	100mm Square	100mm Square



MEGA DRIVES

115,000 NM - 200,000 NM

	MD 110	MD 160	MD 190
Max Torque*	114,395 Nm	169,354 Nm	198,585 Nm
Max Pressure - Do not exceed	240 bar @ 380 lpm		
Max Flow-Do not exceed	380 lpm @ 240 bar		
Max Power-Do not exceed	150 Kw		
Motor	Radial Piston	Radial Piston	Radial Piston
PRV	Included	Included	Included
ECV	Included	Included	Included
Overall Length (In)	1638 mm	1791 mm	1794 mm
Diameter (In)	610 mm	610 mm	610 mm
Weight No Hitch/Oil	1028 kg	1191 kg	1194 kg
Shaft (mm)	130mm Square	130mm Square	130mm Square



ULTRA DRIVES

190,000 NM - 300,000 NM

	UD 190	UD 220	UD 250	UD 300
Max Torque*	186,644 Nm	207,653 Nm	243,495 Nm	305,371 Nm
Max Pressure - Do not exceed	240 bar @ 380 lpm			
Max Flow-Do not exceed	380 lpm @ 240 bar			
Max Power-Do not exceed	150 Kw			
Motor	Radial Piston	Radial Piston	Radial Piston	Radial Piston
PRV	Included	Included	Included	Included
ECV	Included	Included	Included	Included
Overall Length	1915 mm	1915 mm	1915 mm	1915 mm
Diameter	671 mm	671 mm	671 mm	671 mm
Weight No Hitch/Oil	1194 kg	1573 kg	1573 kg	1573 kg
Shaft	150mm Square	150mm Square	150mm Square	150mm Square



XTREME DRIVES

260,000 NM - 500,000 NM

	XD 270	XD 310	XD 410	XD 500
Max Torque*	259,803 Nm	304,646 Nm	398,602 Nm	480,458 Nm
Max Pressure - Do not exceed	240 bar @ 380 lpm			
Max Flow-Do not exceed	380 lpm @ 240 bar			
Max Power-Do not exceed	150 Kw			
Motor	Radial Piston	Radial Piston	Radial Piston	Radial Piston
PRV	Included	Included	Included	Included
ECV	Included	Included	Included	Included
Overall Length	2410 mm	2410 mm	2410 mm	2410 mm
Diameter	820 mm	820 mm	820 mm	820 mm
Weight No Hitch/Oil	2878 kg	2878 kg	2878 kg	2878 kg
Shaft	200mm Square	200mm Square	200mm Square	200mm Square



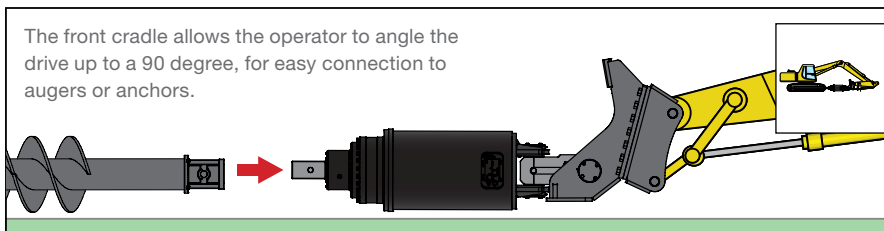
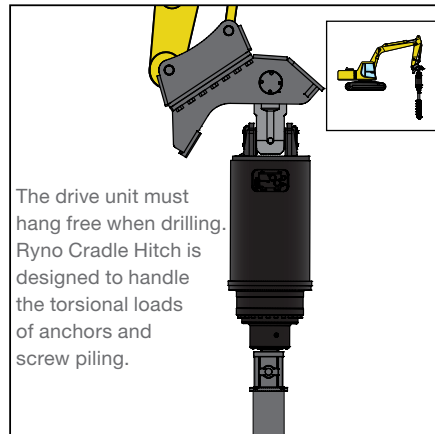
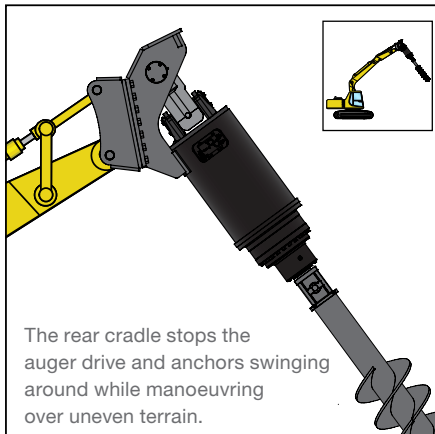
* Output torque specifications are THEORETICAL. Outputs are dependent on the overall system efficiencies associated with the prime movers hydraulic system. This document should be used for information and comparative purposes only. To determine criteria and application-specific information is required, contact DIGGA.

RYNO HITCH

Developed for faster connection to the auger or pile, the Ryno cradle hitch is designed to handle the torsional loads of anchors and screw piling. The Ryno hitch front cradle allows the operator to angle the drive up to 90 degrees for easy connection to augers or anchors while a rear cradle stops the auger drive or anchor from swinging freely when manoeuvring over uneven terrain.

Features:

- 3 cradle positions
- Premium grade steel
- Extra heavy duty, fully engineered design
- Compact and faster connection to the auger/pile
- Safer. No more standing piles or large augers with persons or machinery to connect your drive

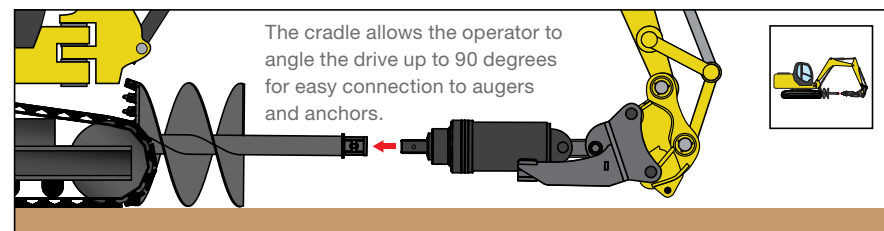
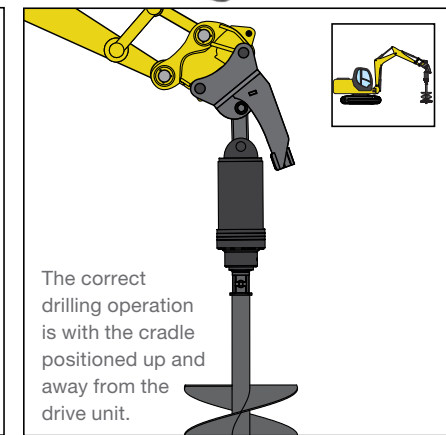
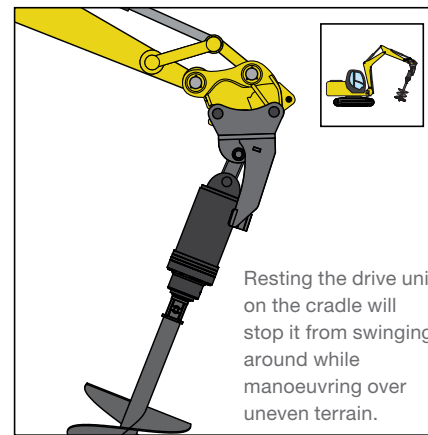


CRADLE HITCH

The double pin hitch with drive unit cradle allows the operator to angle the drive up to 90 degrees with greater support given by the cradle making the drive easier and more stable when connecting to augers or anchors. The Digga cradle hitch is to suit PDD-PD50 drives.

Features:

- Ideal for augering in all ground conditions and screw anchoring
- Loose pin or fixed pin for machines with hydraulic quick hitch



HITCHES

Digga manufacture a range of hitches to suit excavators up to 80t. Configurations include double or single pin fixed and loose pin.

- Single and double pin options available.
- Highly efficient, compact design.
- Premium grade steel.
- Extra Heavy Duty, fully engineered design.
- Faster connection to machine and drive.



SINGLE PIN



MINI EXCAVATORS



DOUBLE FIXED PIN



EXCAVATORS



DOUBLE LOOSE PIN



EXCAVATORS



BACKHOE HITCH



BACKHOES

SWING CONTROL SYSTEM

The Digga Swing Control System (SCS) controls the pendulum action of your auger making it easier to operate and control, safer on the work site, and greatly improving operator efficiency and effectiveness.

- ✓ INCREASED EFFICIENCY
- ✓ INCREASED PRODUCTIVITY
- ✓ INCREASED SAFETY



The revolutionary Digga patented SCS is integrated into the hitch and drive hood; requiring no additional hydraulics and can be retrofitted to most existing Digga auger drives.

Its unique design means the faster you move, the quicker the drive unit stops.



SWING WITHOUT SCS



SWING WITH SCS

MACHINE MOUNTS

Digga manufacture a fixed or optional side shift mount for most skid steer loaders, backhoes, telehandlers and mini machines. The optional side shift frames feature a slide cradle which allows the user to offset the attachment mounted on the frame, enabling trenching and drilling close to structures.



MINI MACHINES



SKID STEER LOADERS



BACKHOES



TELEHANDLERS

AUGERS

TRUE-CUT DIGGA AUGERS CUT A TRUE SIZED HOLE

Digga's true-cut design ensures a 300mm auger drills a 300mm hole. All our augers boast a heavy duty design and fitted with high efficiency cutting heads to maximise your drilling performance. Our range of quality wear parts provide longevity and performance.

DIGGA CUTTING SYSTEMS

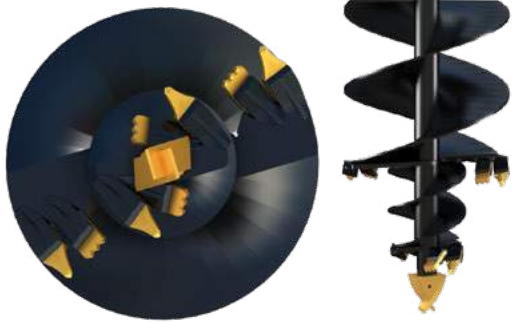
The cutting head is the most crucial part of the auger and this is where Digga technology exceeds the rest of the market. Digga cutting heads are optimised for the most efficient cutting angles and rotational cutting efficiency. Choosing the right cutting head with correct teeth and pilot combinations is essential to ensuring maximum customer satisfaction.

DIGGA CUTTING SYSTEMS

Digga augers are measured from tip to tip of the teeth. The cutting head is what cuts the hole.



TREE PLANTING AUGER BLADED TEETH (EARTH/CLAY)



DESIGNED TO EASILY DRILL HOLES TO PLACE TREES AND SHRUBS OF ALL SIZES & IMPROVE ESTABLISHMENT

Digga tree planting augers are designed to drill a smaller diameter hole for the tap root and a larger secondary hole at the top for the root ball. The design of the cutting system will leave the hole walls rough, not glazed, meaning the plant stock has the maximum chance of establishing.

NOT SUITED FOR ROCK.

A / EARTH AUGERS BLADED TEETH (EARTH/CLAY/SHALES)



EARTH AUGER
FOR GENERAL DRILLING

The angle and geometry of the teeth to the pilot is the key to the efficiency in which these augers perform. Available in earth, tungsten (TC) or multi-faced tungsten (MFT) braised onto the face of the teeth, providing longer wear life and greater cutting performance.

*NOT SUITED TO HARDER
FRACTURABLE ROCK.*

RC / ROCK-COMBO AUGERS TAPER TEETH (ALL GROUND CONDITIONS)



TAPER TEETH DESIGNS
ARE THE ULTIMATE ALL
PERFORMANCE AUGER

No need to have two augers for different conditions our rock-combo augers are suitable for all ground conditions. Cut a clean hole in soft earths and clays and have the ultimate ripping ability in fracturable rock.

*FOR LARGER EXCAVATORS IN
HARDER CONDITIONS, TTL - TRIPLE
TUNGSTEN TEETH ARE THE RIGHT
SELECTION FOR OPTIMUM SOFT
ROCK DRILLING.*

DR / ROCK AUGER ROTATING ROCK PICK TEETH (SHALE/FRACTURABLE ROCK)



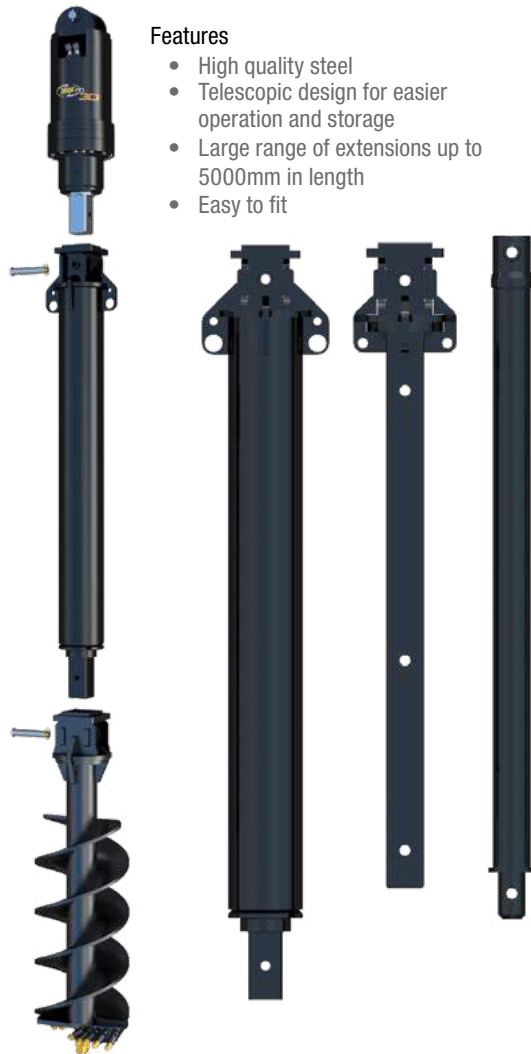
HEAVY DUTY DESIGN AND
EFFICIENT CUTTING HEAD MAKE
THE ULTIMATE DEDICATED ROCK AUGER

Digga's rock augers are engineered with a heavy duty design and high efficiency cutting heads to maximise your drilling performance. Fitted with a range of quality wear parts providing superior wear and performance in harder grounds.

*N.B. NOT SUITED FOR
EARTH OR CLAY DRILLING.*

EXTENSIONS

Digga drilling extensions are built for strength and capable of handling powerful loads from larger machines. With a full range of adaptors available there is an extension to suit very model of Digga auger drive and augers.



Features

- High quality steel
- Telescopic design for easier operation and storage
- Large range of extensions up to 5000mm in length
- Easy to fit

WEAR PARTS, TEETH AND PILOTS

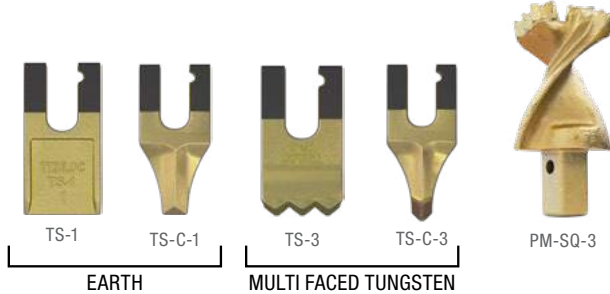
Digga provides a full range of auger teeth and pilots to suit your individual requirements - standard, flat tungsten, and multi-faced tungsten for tougher ground conditions. Digga also provide rotating rock pick teeth for dedicated rock drilling.

- Quality made
- Drill into most ground conditions
- Huge range of teeth for most augers and application

TRULOC BLADED TEETH TO SUIT A4 AUGERS (EARTH)

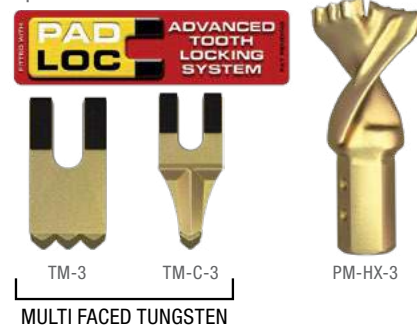
Digga's new TRULOC tooth range allows the tooth to be secured in 3 different ways. You can choose to use one, two or all three methods to hold your auger teeth.

The range also features an easy to remove pin, stabilising channels and the Digga quality that you've come to expect. The TRULOC teeth are suitable for light to moderate ground conditions.



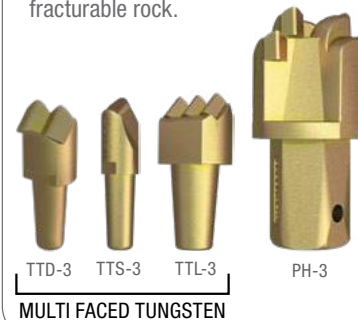
PADLOCK BLADED TEETH TO SUIT A6 AND A8 AUGERS (EARTH)

Our Padloc tooth retaining system utilises heavy duty rubber pads vulcanised onto the metal legs of the teeth to ensure your teeth are locked in tight whilst still easy enough to remove for easy replacement in the field.



TAPERED TEETH TO SUIT RC/ ROCK-COMBO AUGERS

No need to have two augers for different conditions. Ideal in all drilling conditions up to very hard rock. Cut a clean clear hole in soft earth and clay and have the ultimate ripping ability in fracturable rock.



ROTATING ROCK PICK TO SUIT ROCK AUGERS

Engineered to burst into fracturable rock, concrete and abrasive conditions; they feature a dimpled retainer to provide increased holding power.



TRENCHERS

DIGGA'S BIGFOOT TRENCHER RANGE

The Bigfoot trencher features an adjustable depth control foot which ensures the operator trenches to a set depth at all times. With three different chain options for trenching in different ground conditions, trench in general earth to rocky ground, concrete, asphalt and even frozen ground with ease.

THE MOST ADVANCED TRENCHER

Digga Bigfoot trenchers are the most user friendly on the global market. Our patented crumber bar allows the operator to start trenching in the trench eliminating the need to get out of the machine to reset the Digga crumber bar. The trencher foot can be seen clearly from within the cab and helps the operator to see when the trencher is in the correct trenching position. The spoil auger and barrel clear the spoil faster to increase efficiency and productivity.

FEATURES

- Headstart crumber - start trenching with the crumber bar in the down position
- Adjustable skid foot - ensures the operator trenches to a set depth at all times
- Easy to see trencher foot - visible from within the cab to ensure that the trencher is in the correct position
- Barrel and spoil auger - removes spoil faster
- 3 different chain options - trench in most ground conditions
- Quality made - built with tried and tested materials and components
- 3 year gear box and 2 year motor warranty for complete peace of mind

MINI BIGFOOT TRENCHER

Delivering maximum performance and quality, the mini Bigfoot trencher is designed specifically for mini loaders or those wanting a lighter weight trencher with maximum efficiency. This is the lightest, most compact and power packed mini trencher on the market today and fitted with a 1 5/8" chain.

	Mini Bigfoot
Length	1402 mm
Horizontal	645 mm
Width	989 mm
Motor Size	2K Bell EATON
Hydraulic Flow	40-90 lpm
Max Pressure - Do not exceed	240 bar @ 60 lpm
Max Flow - Do not exceed	95 lpm @ 200 bar
Max Continuous Power	25 Kw (34 hp)
Cutting Width	100, 150, 200 mm
Cutting Depths	Up to 900 mm

BIGFOOT TRENCHER

Ideal for excavators from 1.2T to 4.5T with flows between 30-75lpm, this trencher is suitable for trenching 900mm digging depth and 200mm digging width and fitted with a 1 5/8 chain.

	BFT-900
Length	1920 mm
Horizontal	668 mm
Width	1212 mm
Motor Size	2K Bell EATON
Hydraulic Flow	50-95 lpm
Max Pressure - Do not exceed	240 bar @ 60 lpm
Max Flow - Do not exceed	95 lpm @ 200 bar
Max Continuous Power	25 Kw (34 hp)
Cutting Width	100, 150, 200 mm
Cutting Depths	Up to 900 mm
Weight (150mm combo chain)	261 kg

BIGFOOT XD TRENCHER

Ideal for excavators from 4.5T to 8T with flows between 60-150lpm; this trencher is fitted with a 2" chain, and suitable for heavy duty trenching up to 1500mm digging depth and 300mm digging width. A high flow model is also available.

	BFTXD-900	BFTXD-1200	BFTXD-1200HF	BFTXD-1500HF
Length	2225 mm	2532 mm	2532 mm	2689 mm
Horizontal	777 mm	777 mm	777 mm	836 mm
Width	1212 mm	1212 mm	1212 mm	1212 mm
Motor Size	2K Bell EATON	2K Bell EATON	6K Bell EATON	6K Bell EATON
Hydraulic Flow	60-115 lpm	60-115 lpm	105-170 lpm	105-170 lpm
Max Pressure - Do not exceed	240 bar @ 60 lpm		240 bar @ 130 lpm	
Max Flow - Do not exceed	95 lpm @ 200 bar		160 lpm @ 190 bar	
Max Continuous Power	25 Kw (34 hp)		50 Kw (67 hp)	
Cutting Width		150, 200, 250, 300 mm		
Cutting Depths	Up to 900 mm	Up to 1200 mm	Up to 1200 mm	Up to 1500 mm
Weight (150mm combo chain)	388 kg	405 kg	424 kg	461 kg

MICRO EXCAVATORS
MINI MACHINES



BACKHOES
SKID STEER LOADERS
EXCAVATORS



HIGH FLOW BACKHOES
HIGH FLOW SKID STEER LOADERS
EXCAVATORS
TELEHANDLER



TRENCHER CHAINS

No ground is too soft and there is no ground too hard for the Bigfoot trencher with chain options available for soft clean grounds to the hardest of shale.

Choose from three types of trencher chains depending on your ground conditions: earth, combination, and Diggatac. What's more, Digga's Diggatac range provides extended tooth life and reduced vibration, particularly when starting in tough conditions.

CHAINS

All Digga trenchers are available with a variety of chain types and widths to suit your individual needs. We only use anti-back-flex chains to give you better performance.

EARTH

- Cup tooth on every second station.
- Best for soft clean ground with no floaters or tree roots.



COMBO

- Combination of earth and tungsten teeth.
- Suitable for most applications.
- Cuts through hard soils, roots, soft shale and rocky ground.



DIGGATAC

- Full tungsten teeth on every station.
- Best for rocky hard shale, asphalt or even frozen ground.



DIGGA MANUFACTURE 70 + ATTACHMENTS

PLEASE CONTACT US FOR MORE INFORMATION ON WHICH ATTACHMENTS ARE AVAILABLE IN YOUR REGION



4 IN 1 BUCKET

Designed and manufactured using only the highest quality components and materials. Digga has an extensive 4 in 1 bucket range designed to suit Skid Steer Loaders of all sizes.



ROCK BUCKET

The Digga rock bucket is used for fast clean-ups, sifting out debris & rocks, and gathering material away from buildings and obstructions. Rock buckets can also be used in waste processing applications.



CEMENT MIXER

Quick, easy and cost effective, convert your auger drive into a cement mixer. Simply remove your auger and connect mixer cradle and bowl to use.



PALLET FORKS

Our pallet forks are quality tested to ensure strength and reliability:

- Heavy duty frame.
- Safer floating tyne design.
- Easy quick fit to most Skid Steer Loaders.



BROOMS

Sweep and collect all kinds of debris in factories, car parks, road construction, stock yards, shipping containers and more.



DOZER BLADE

The Digga dozer blade is a versatile attachment for dozing, levelling ground and general earthmoving work. Hydro-electric controlled angle and tilt using one loader valve.



STICK RAKE

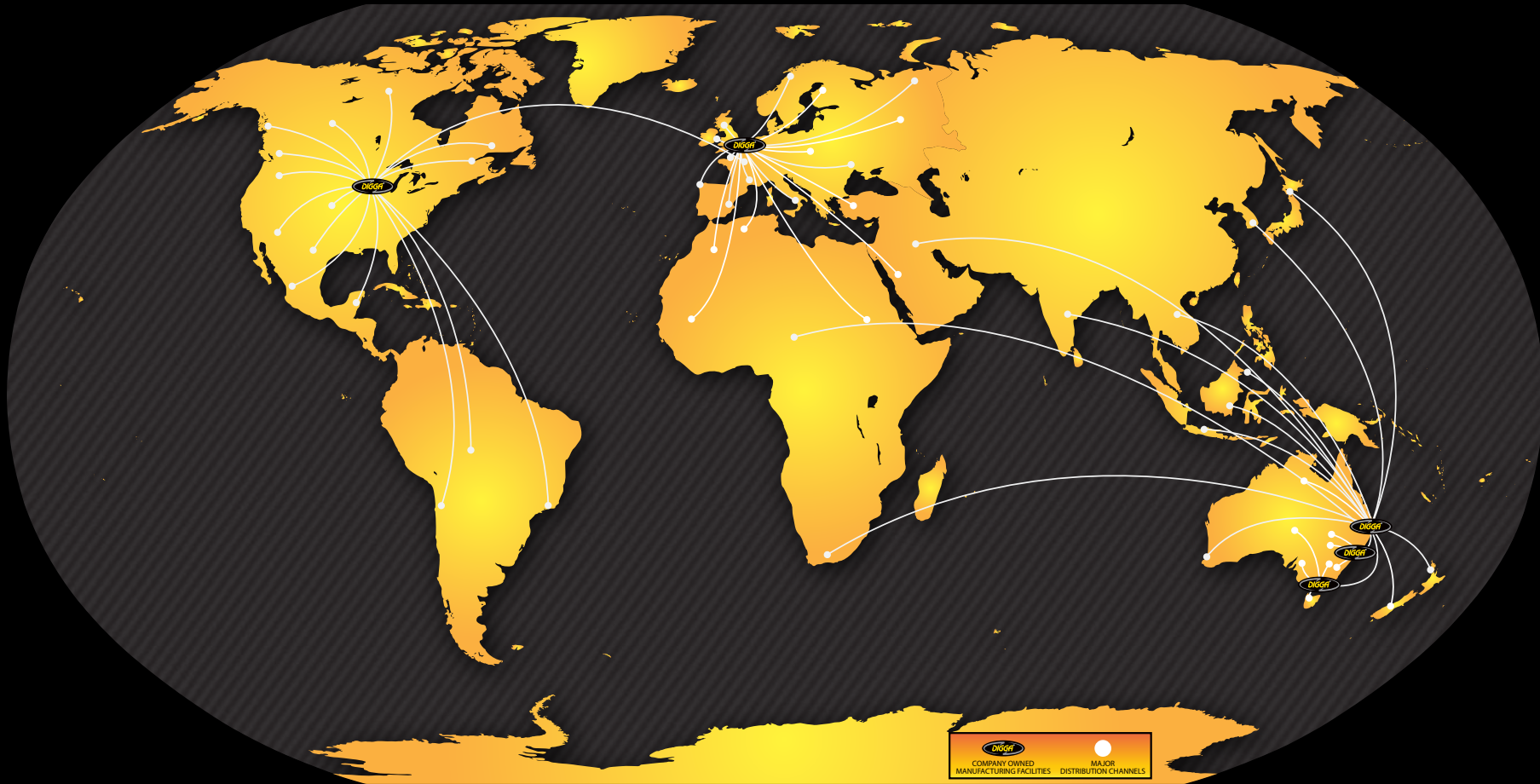
The stick rake is ideal for fast clean-ups, vegetation management, sifting soil/rocks and removing unwanted shrubbery and overgrowth. Material can be sifted and sorted to clear out unwanted debris and leave good soil or material behind. Available for multifit and Cat skid steer loaders.



ONE MAN MACHINE

Digga's one-man post-hole boring machine is safe and powerful yet won't throw the operator about. With its durable rubber tyres it is easy to move around making it perfect for fencing, post holes, tree planting various agricultural and construction uses.

5 GLOBAL MANUFACTURING PLANTS AND 500 WORLD WIDE DISTRIBUTION CENTRES



DIGGA

HEAD OFFICE

4 OCTAL STREET
YATALA QLD 4207
AUSTRALIA

PH: +61 7 3807 3330
EMAIL: INFO@DIGGA.COM

WWW.DIGGA.COM

For further information please contact your local authorised Digga dealer



IMPORTANT: The attachments shown in this brochure are for illustrative purposes only and may include some non-standard optional extras. All specifications should be regarded as approximate only. For full details contact your Digga Dealer. In the interest of product improvement, Digga reserves the right to change these specifications without prior notice.